



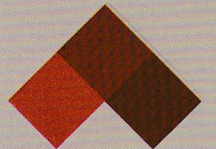
الحرمين
الحرمين للهياكل المعدنية
Al Haramin For Structural Steel

إحدى شركات روفينج لأنظمة الحديد

Al Haramin For
Structural Steel



Al Haramin For Structural Steel



INDEX

Introduction	3
THE MAIN REASONS	4
THE PRE - ENGINEERED STEEL BUILDINGS	7
STANDARD BUILDING	8
MAIN FRAME TYPES	9
STRUCTURE DETAILS	10
PANEL PROFILES	12
PANEL ACCESSORIES	13
STANDARD PANEL COLOR	14
Al dowish Show Room 10 , 500m2	16
Medicine Werehouse 4300 m2	17
Water Factory 5700 m2	19
Alawwad Werehouse 84600 m2	21
Alawad Werehouse 30000 m2	23
Horizon Show Room 2500 m2	25
Building and Construction Show Room 15400 m2	27
Show Room Al moajel 2700 m2	29
Maintenance Werehouse 7200 m2	31
Al athalah Steel Factory 15000 m2	33
All karak Mall	35
THE CLIENTS	37

Al Haramen For Structural Steel

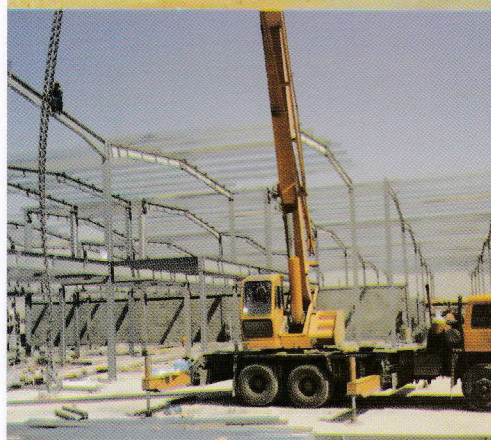
Free Design, Technical Assistance and Site Supervision Al Haramen Specializes in Design, Manufacture, Supply and Erection of Pre - Engineered Steel Building for projects such as: Industrial Building, heavy Industry building Airport, Terminal Exhibition Center Retail Building , Hydroelectric Plant, Cold-storage, Steel Mill Tower and many Kinds of steel Structure buildings.

Over the years, Al Haramen has earned a reputation for providing Quality & Cost Effective Solution for buildings, manufactured in according to international Standards.

Our office is staffed with qualified engineers and specialized software of design & calculation to provide you with quick response and solution for your projects and comprehensive quotations including proposal drawings and / or approval drawings.

Our factories is equipped with all automatic machines as CNC Cutting, Hydraulic Cutting, Auto welding, Straighter machine, purlin, panel, trim, curved forming and shot blasting, which is capable to produce more than 30,000 MT of primary members per year.

Al Haramen is comitted to being a professional supplier of industrial steel building and on innovative Products, outstanding quality and uncompromising Customer service.



- Leader in Steel Production
- Aligning production with the INTERNATIONAL STANDARDS
- Environmental Challenge
- Growing Industry.

THE MAIN REASONS

Why Al Haramen is uniquely positioned to be steel building supplier of choice to many companies.

Quality products:

All members of the Al Haramen Producers Association enjoy international Standards Organization certification ISO 9001: 2008 and Al Haramen products enjoy certification of recommendations of many large repeated clients.

Competitive pricing:

Investments in technology provide state of the art production facilities and new production technologies mean that Al Haramen can for quality products at consistently competitive prices.

Experienced & skilled workforce:

Excellent standards of training and education ensure an expert workforce for highest production standards.

Proven Production Capacity

to meet growth in future levels of demand - Al Haramen IS OF THE largest producer IN VIETNAM.

Latest technologies

Production techniques integrate world-standard technological practices, such as the world's most productive welding, cutting and blasting machines.

Modern infrastructure

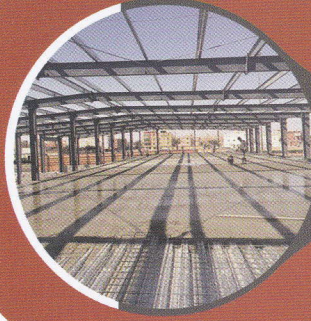
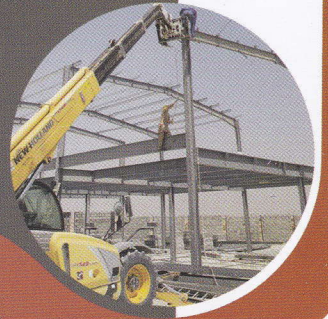
consolidated investments have provided Al Haramen with a world-class infrastructure meaning it can get its steel products fast to market.

Proximity to markets

Al Haramen FACTORIES AND OFFICES position on very close distance of the industrial market means it can respond to demand quickly and on time.

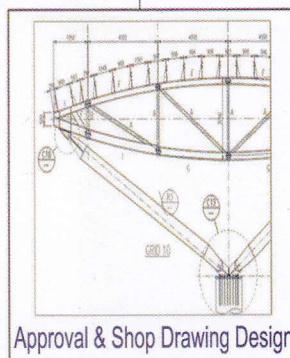
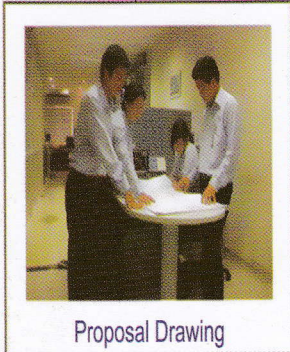
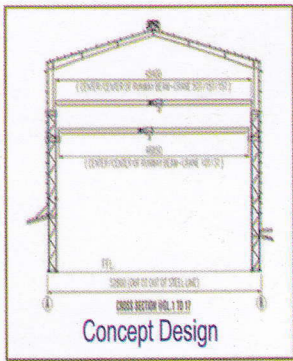
Continued Investments

Al Haramen continues to invest in upgrading, enhancing and improving production methods and innovative products.



DESIGN - FABRICATION - ERECTION

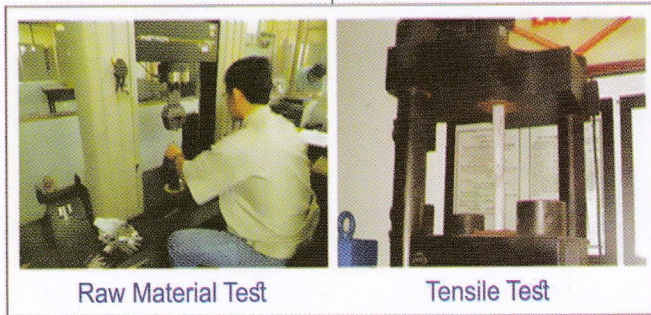
DESIGN



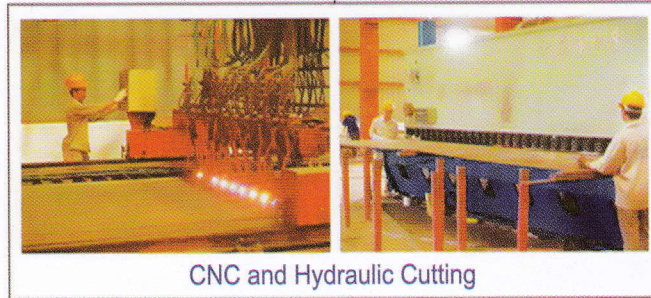
Passed



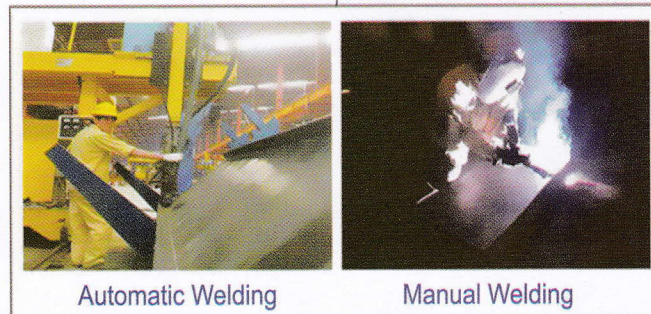
FABRICATION



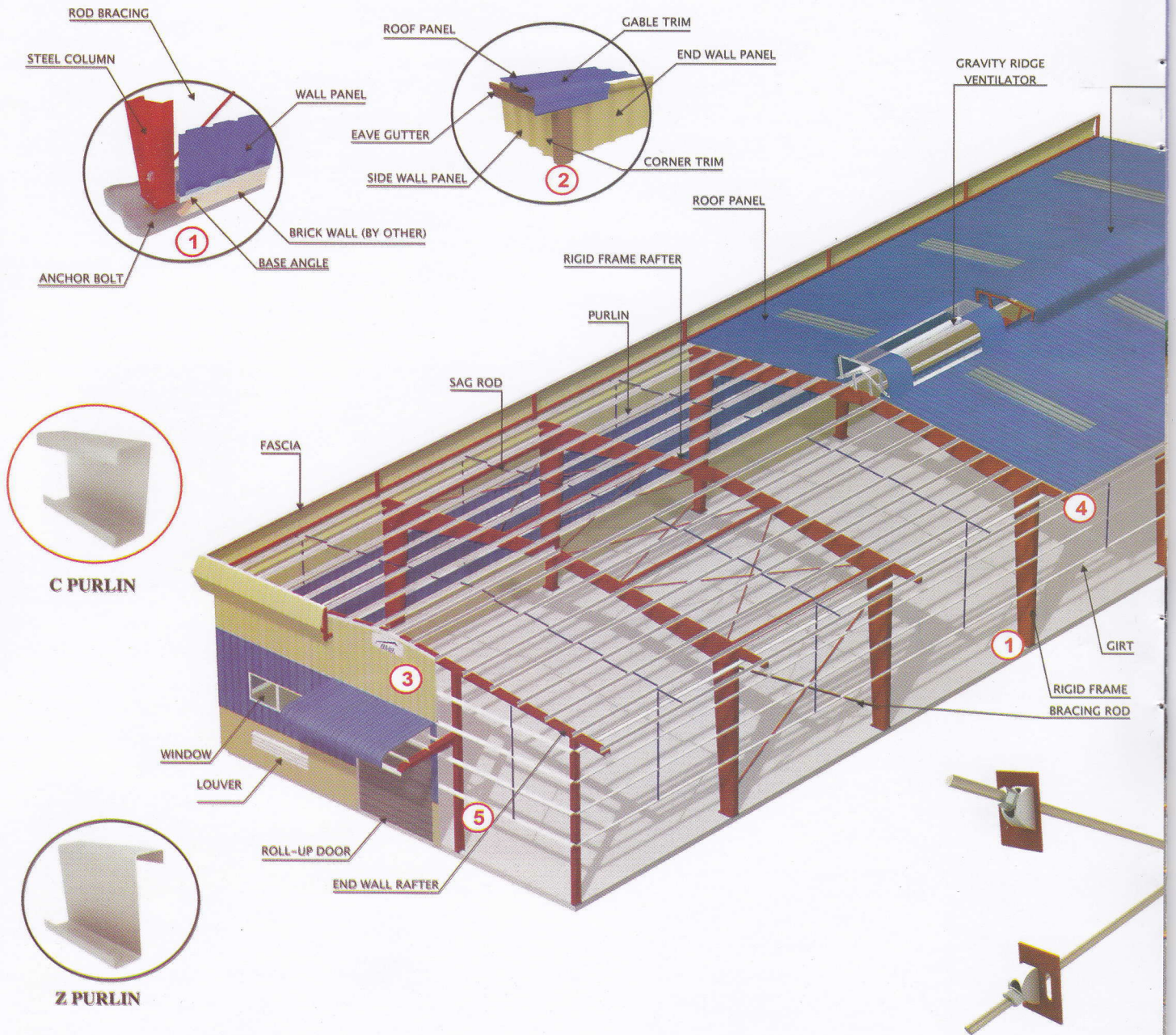
Passed Checking



Passed Checking



THE PRE - ENGINEERED STEEL BUILDINGS



STANDARD BUILDING

STANDARD CODE APPLIED



(MBMA) Low Rise Building Systems Manual Metal Building Manufacturer's Association, Inc.



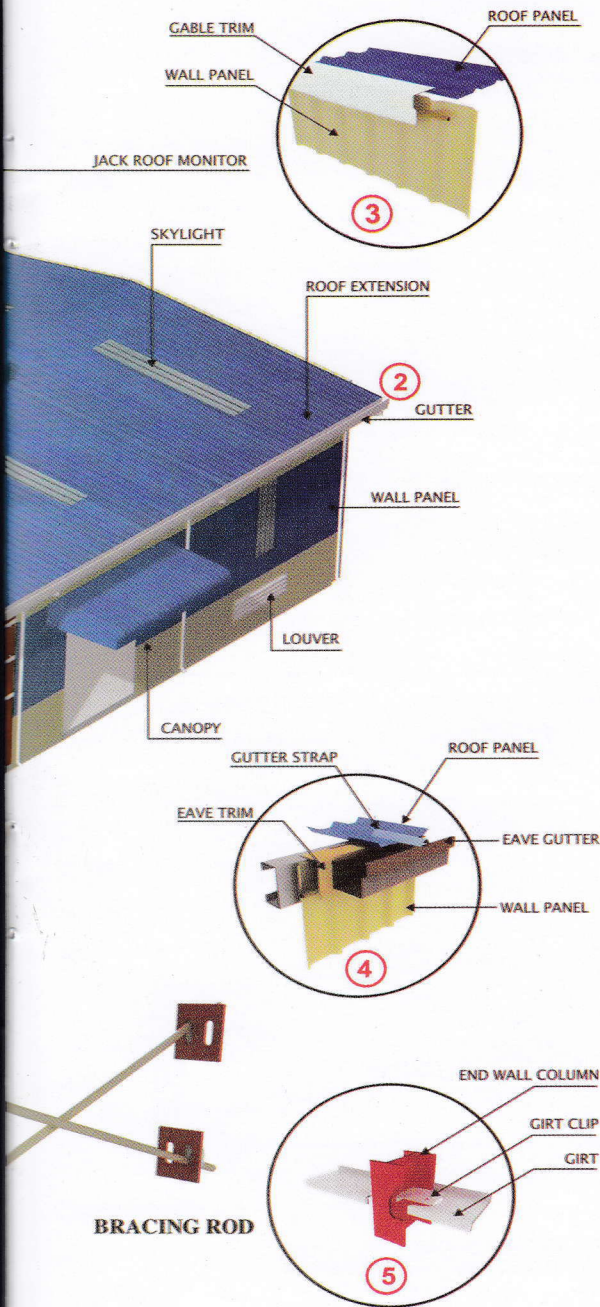
(AISC) Manual of Steel Construction, Allowable Stress Design American Institute of Steel



(AWS) Structural Welding Code-Steel ANSI/AWS, D1.1-2008, American Welding Society.

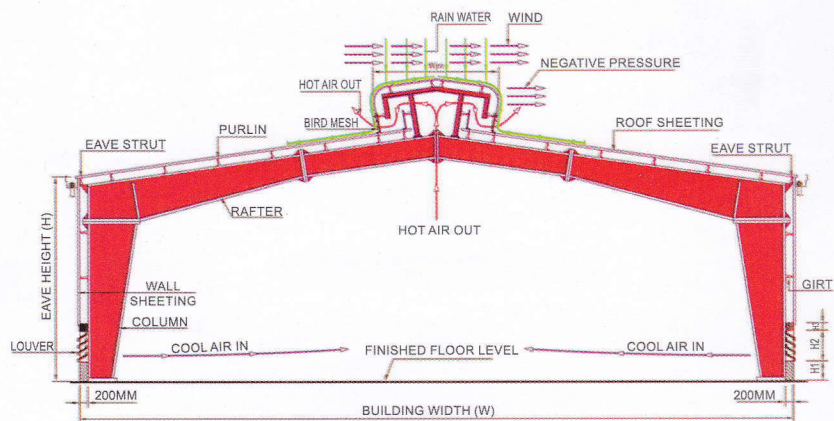


(AISI) Cold Formed Steel Design Manual American Iron and Steel Institute

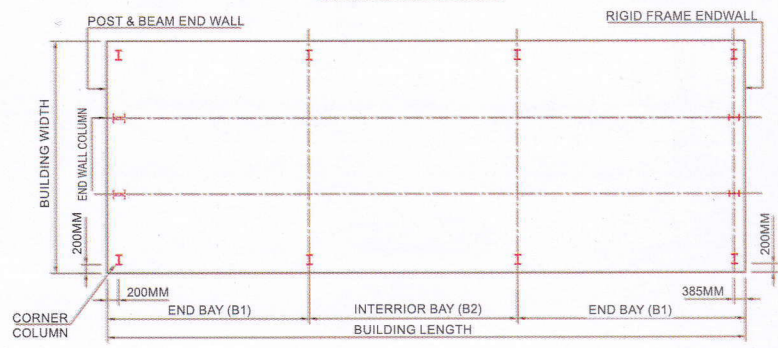


Design Load: unless otherwise specified the pre-engineered buildings are

- ▼ Live load on roof: 0.57 KN/m²
 - ▼ Wind load speed: 110/130/140 ... Km/h
 - ▼ Earthquake load, snow load, collateral loads or any other must be specified in quotation
- .Loads are designed in accordance with the

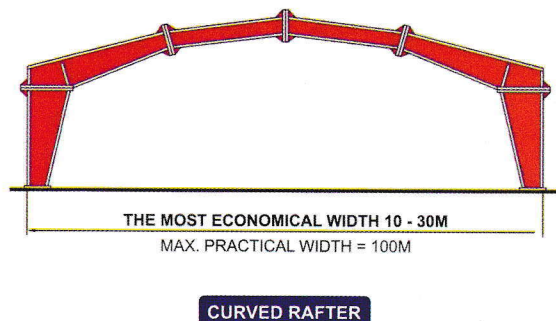
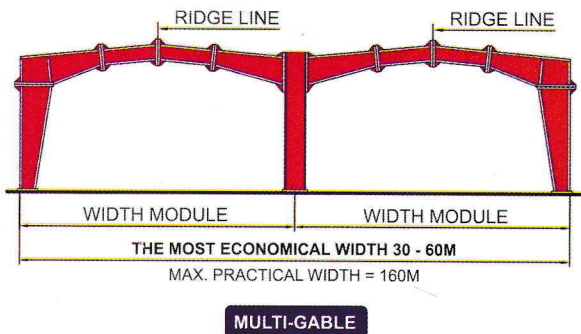
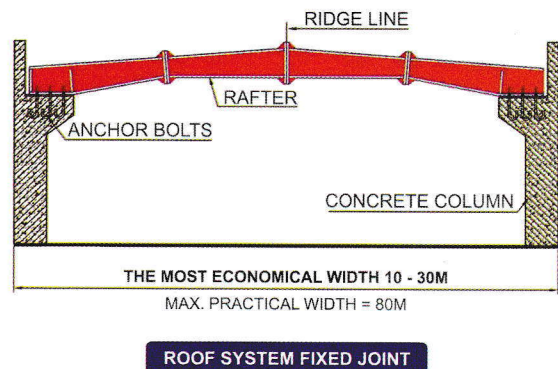
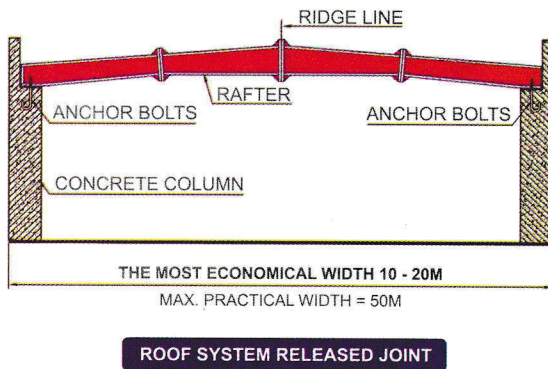
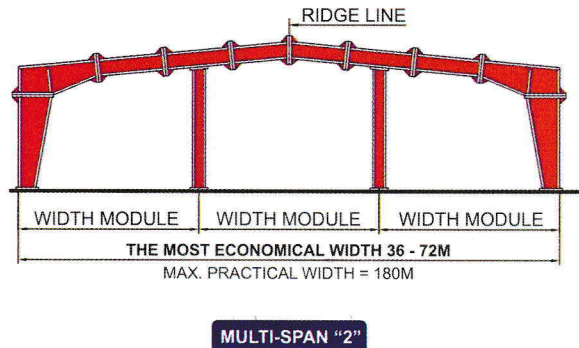
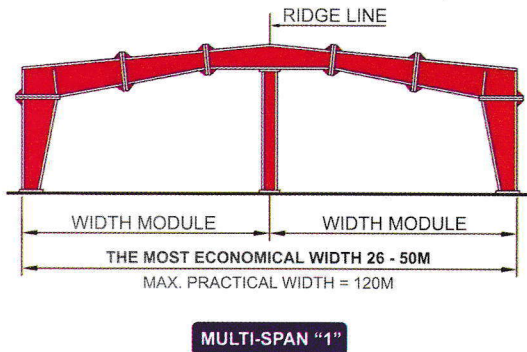
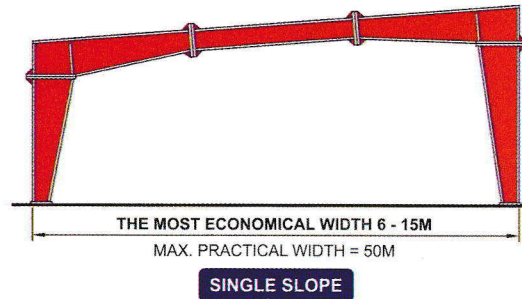
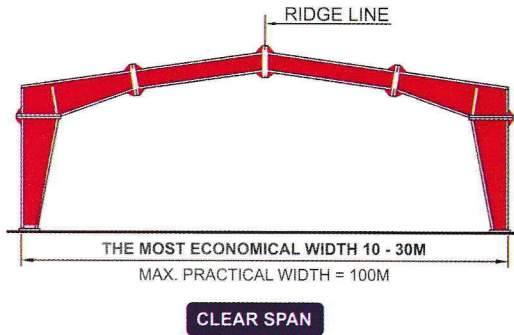


TYPICAL CROSS SECTION

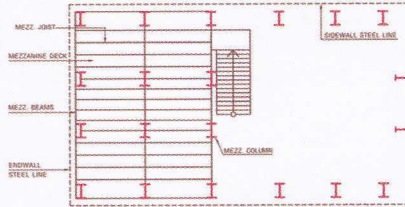
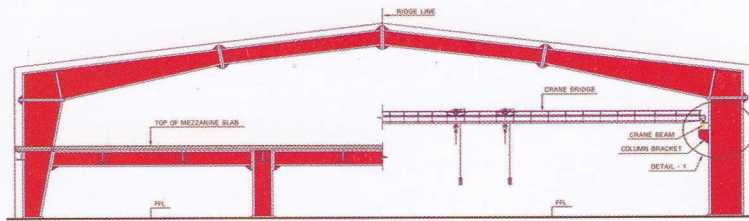


MAIN FRAME TYPES

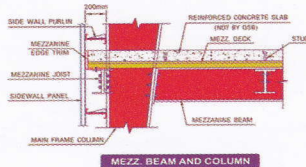
Al Haramen recommends the most economical building width ranges:



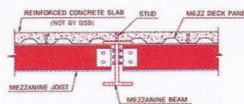
STRUCTURE DETAILS



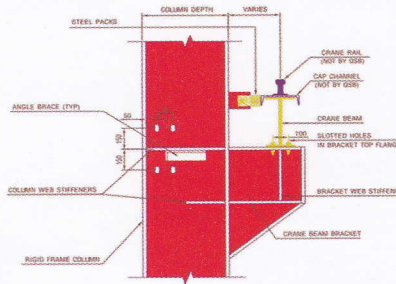
MEZZANINE PLAN



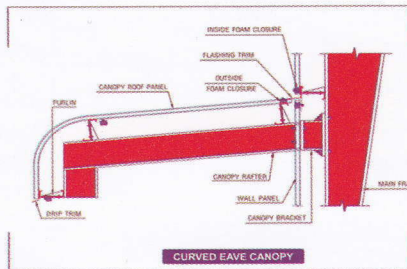
MEZZ BEAM AND COLUMN



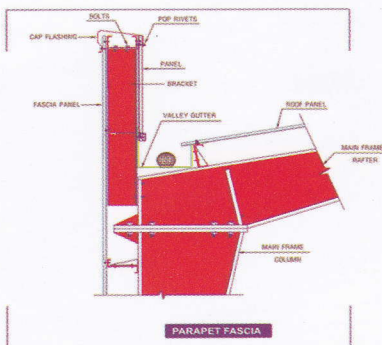
JOIST AND BEAM



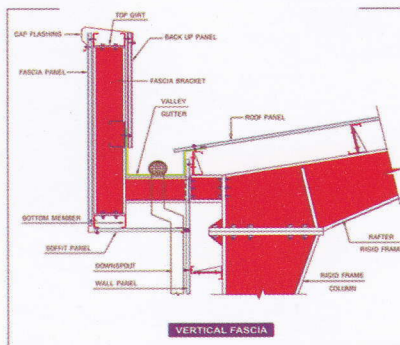
DETAIL - 1: CRANE BEAM AND BRACKET



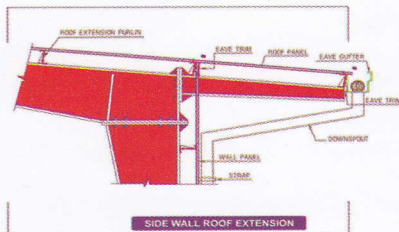
CURVED EAVE CANOPY



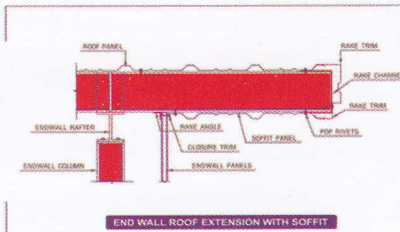
PARAPET FASCIA



VERTICAL FASCIA

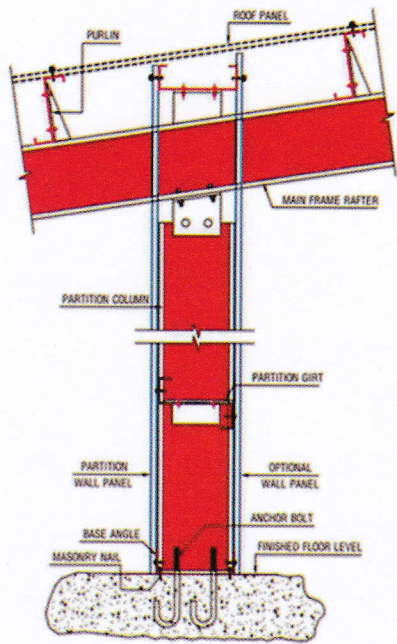


SIDE WALL ROOF EXTENSION

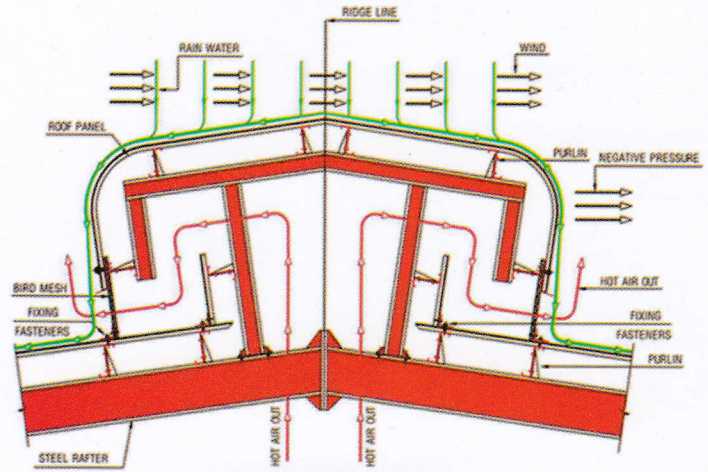


END WALL ROOF EXTENSION WITH SOFFIT

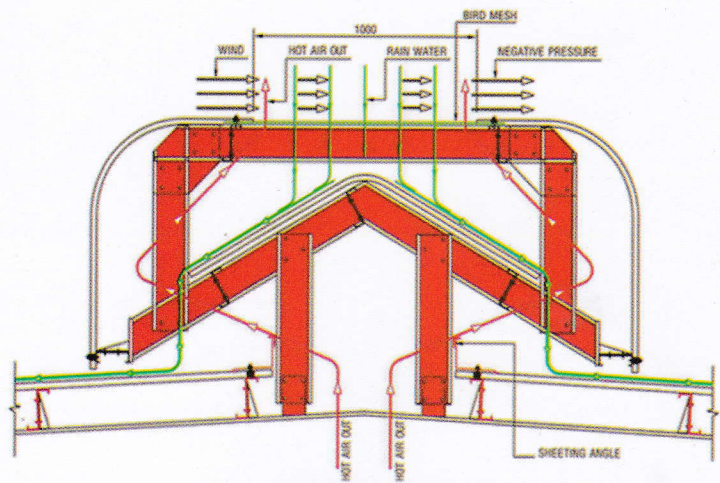
STRUCTURE DETAILS



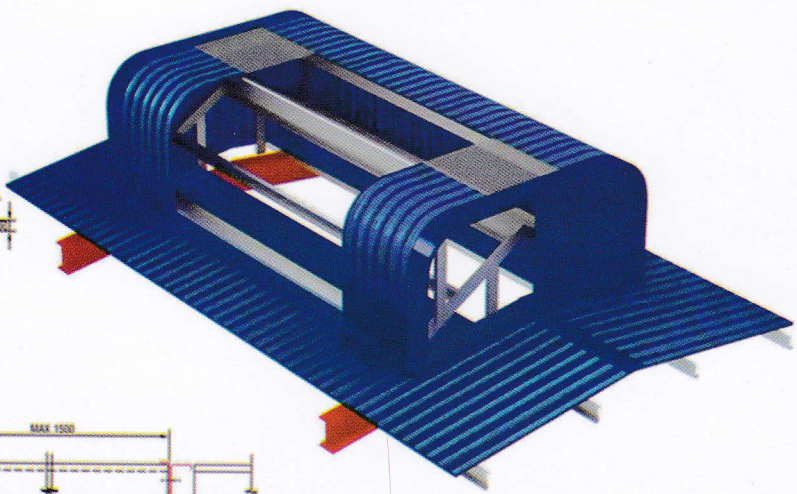
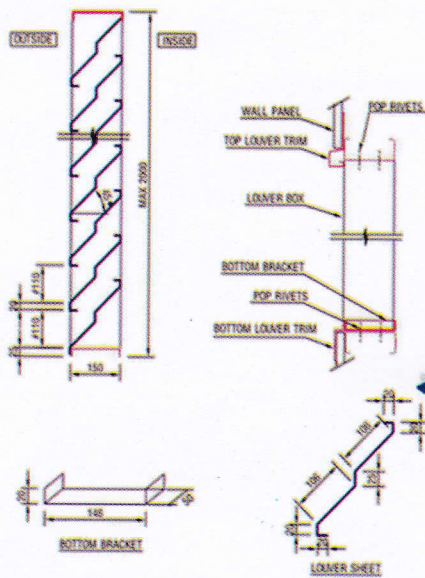
LONGITUDINAL PARTITION



JACK ROOF MONITOR



RIDGE VENTILATOR



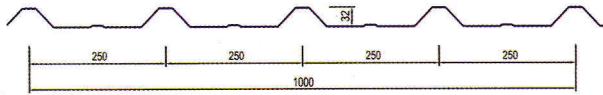
STANDARD BOX LOUVER

PANEL PROFILES

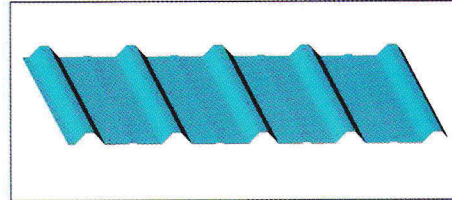
ROOF PANEL: Zinc - Alume alloy coated sheet, which has superior corrosion resistance and long life.

WALL PANEL: Pre - painted Zinc - Alume alloy coated steel sheet, which is not only good corrosion resistance but also good decoration as well.

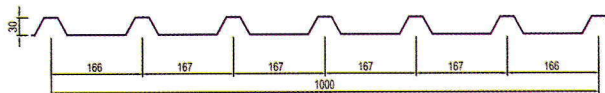
5 RIBS PROFILE



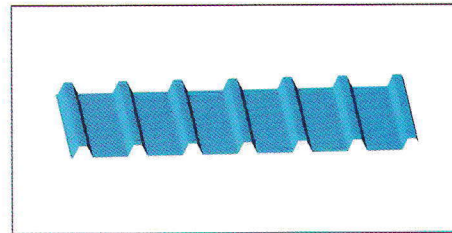
Advantages: Being one of the most popular profile; Easy to install; High ribs; Suitable for roofing, Strong wind areas; Low slope up to 10%



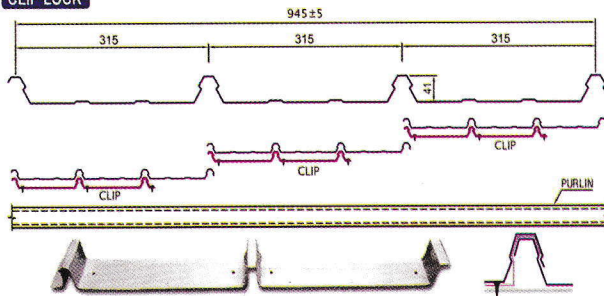
7 RIBS PROFILE



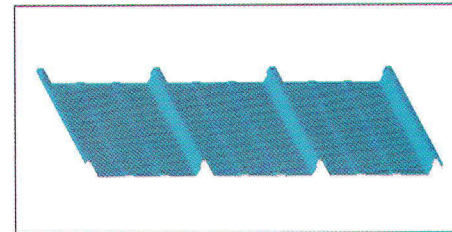
Advantages: It is Excellent for decoration; Easy to install; Suitable for walling



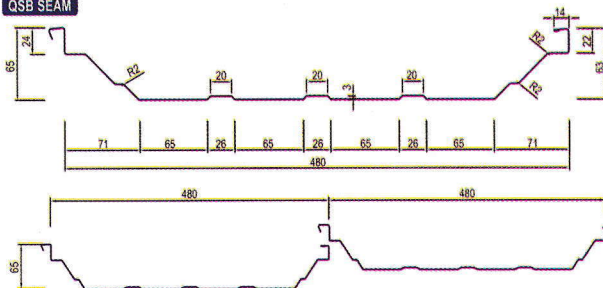
CLIP LOCK



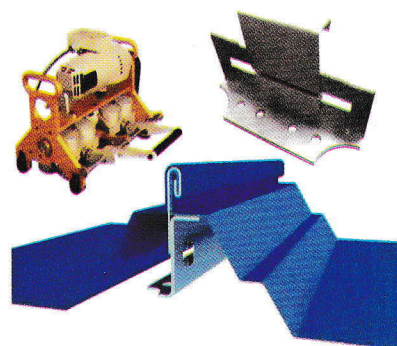
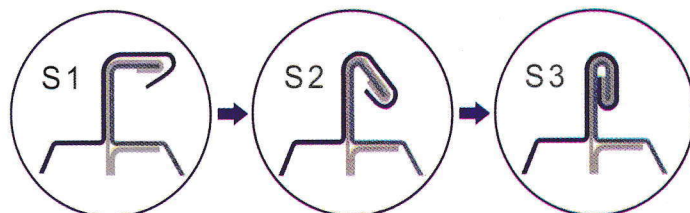
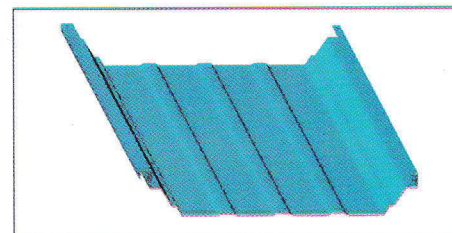
Advantages: Good Leaking prevention; modernity; Suitable for roofing, Strong wind areas; Low slope up to 6%



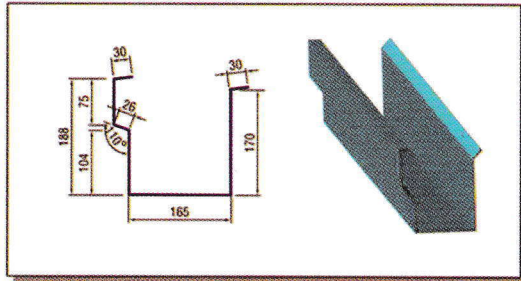
QSB SEAM



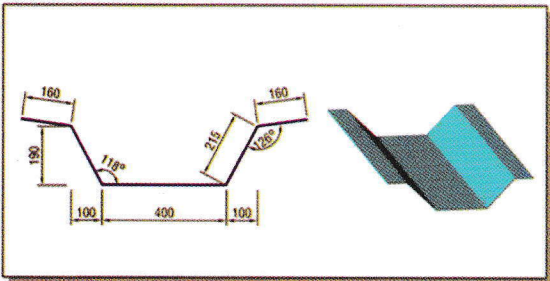
Advantages: Withstanding strong wind Uplift; Excellent appearance and modernity; Great Reliability; Long life; Without having any end laps; Totally leaking prevention; Low slope up to 3%



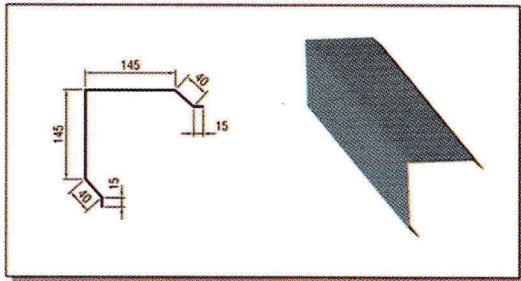
PANEL ACCESSORIES



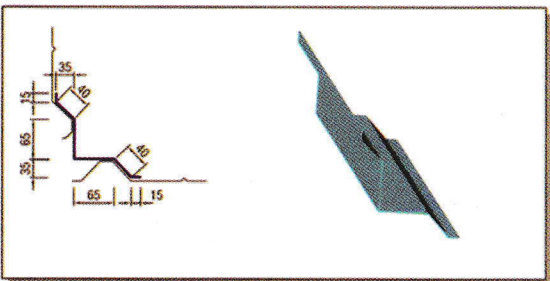
EAVE GUTTER



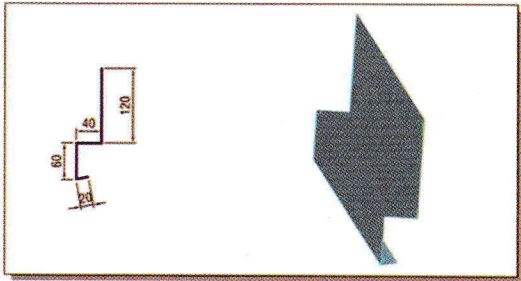
WALEY GUTTER



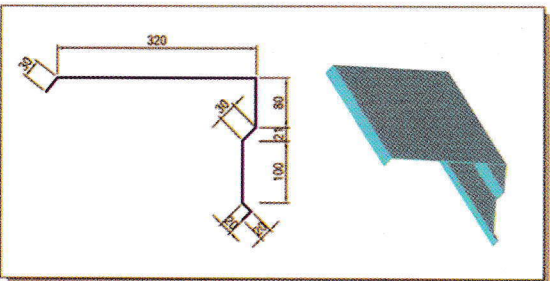
OUTSIDE CORNER TRIM



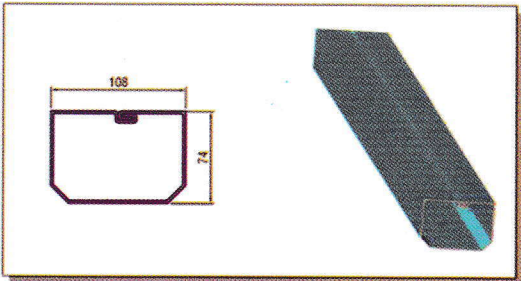
INSIDE CORNER TRIM



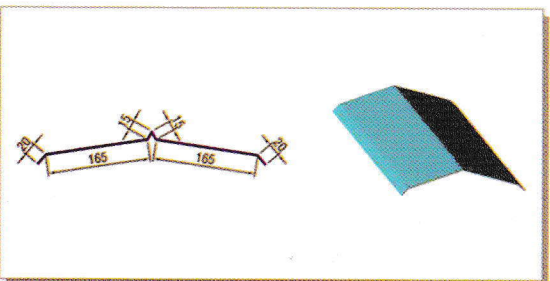
DRIP TRIM



GABLE TRIM



DOWNSPOUT



RIDGE CAP

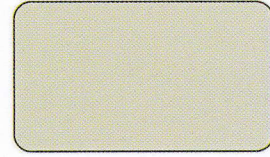
STANDARD PANEL COLOR



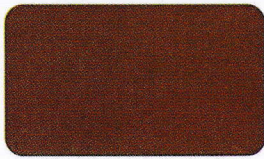
B - BLUE 1



B - BLUE 2



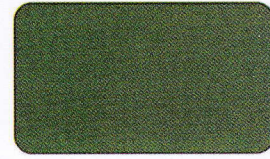
B - WHITE



B - RED



B - DARK GREY



B - GREEN

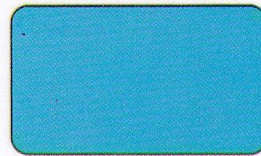
STANDARD FRAME PAINTING COLOR



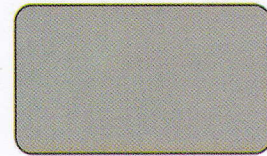
APPLE



GREY BLUE

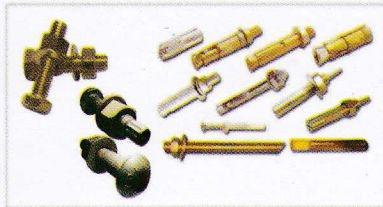
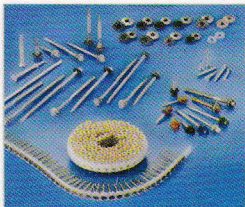


BLUE



GREY

SUNDRY ITEMS

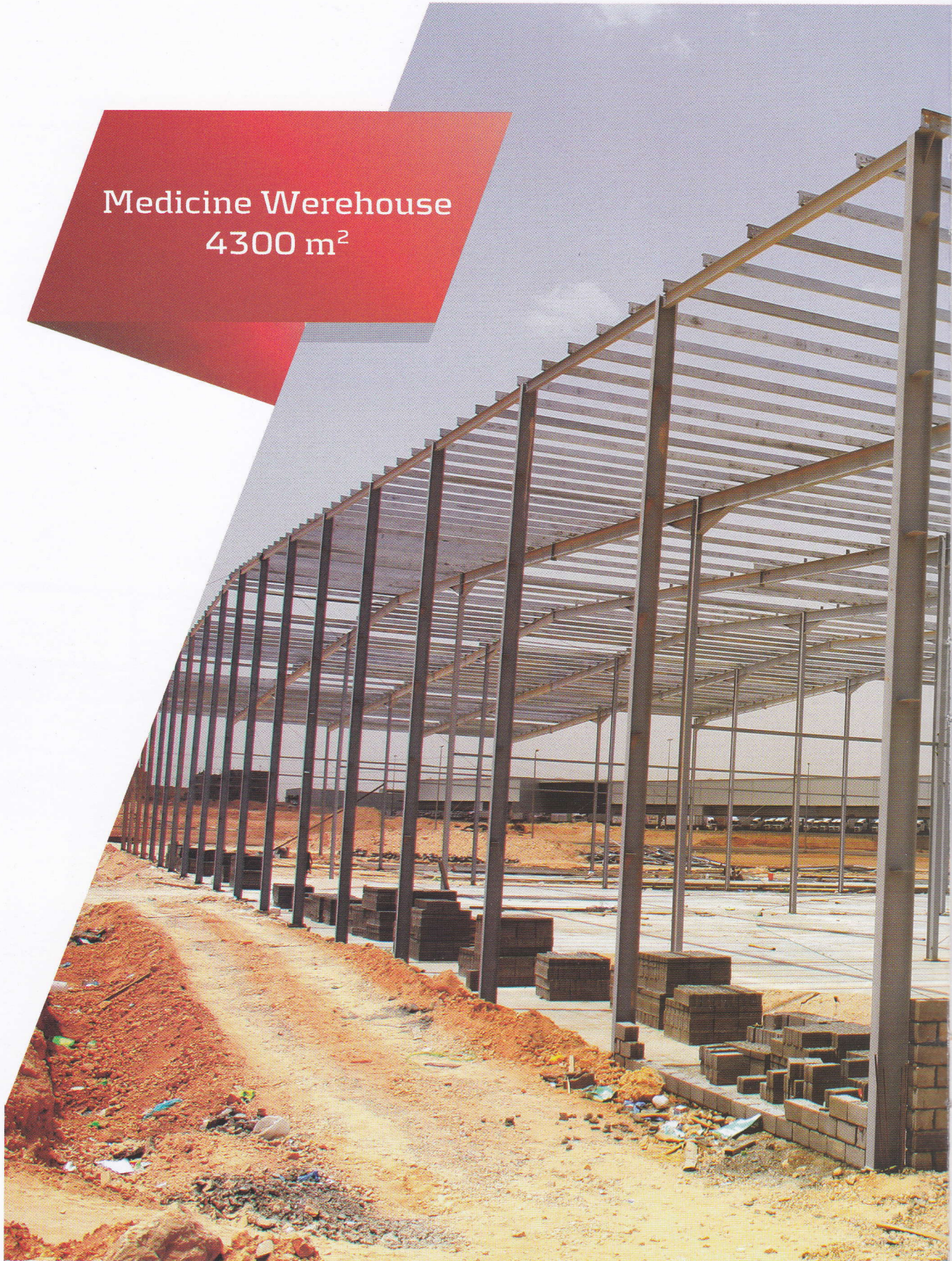






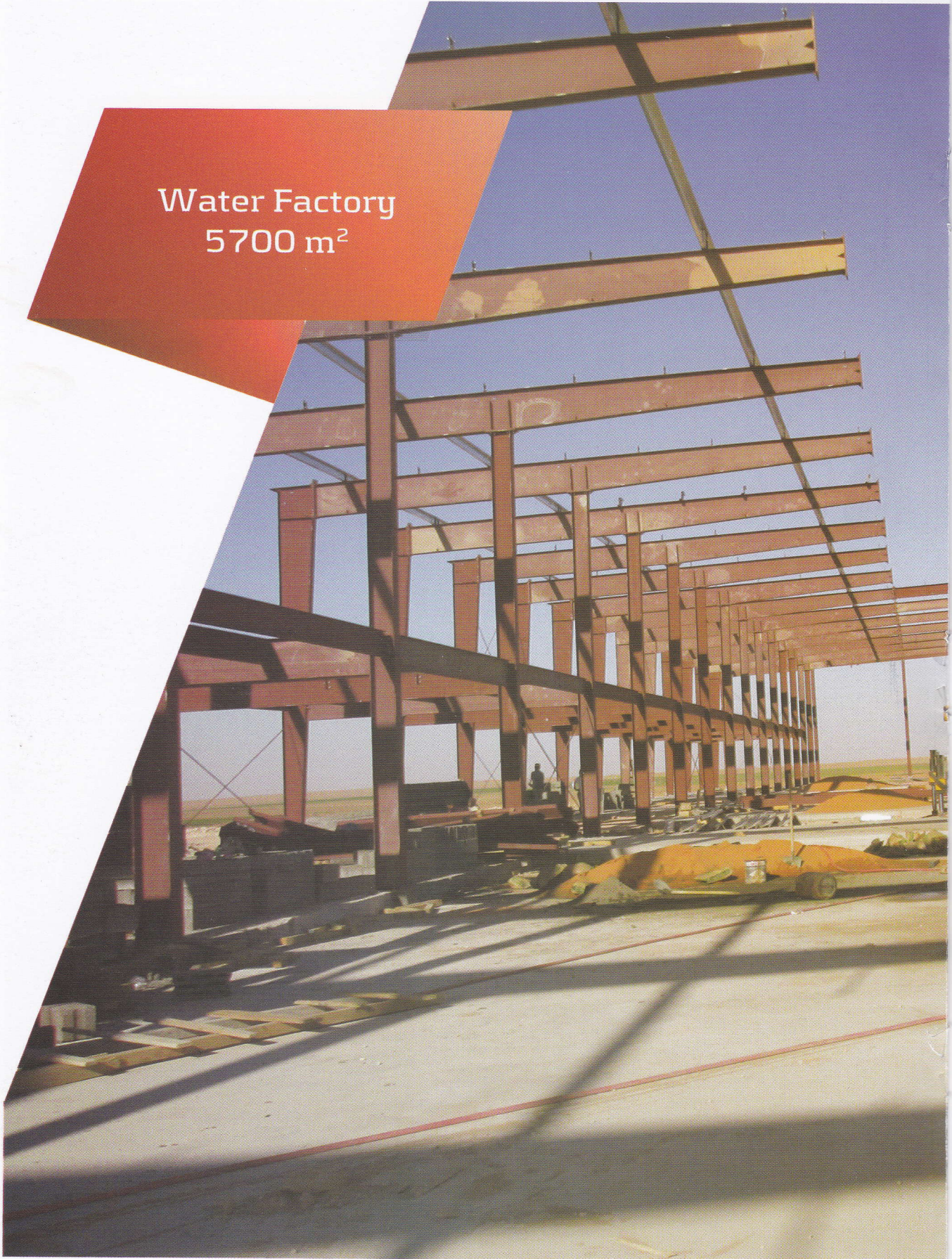
Al dowish Show Room 10 , 500m²

Medicine Warehouse
4300 m²



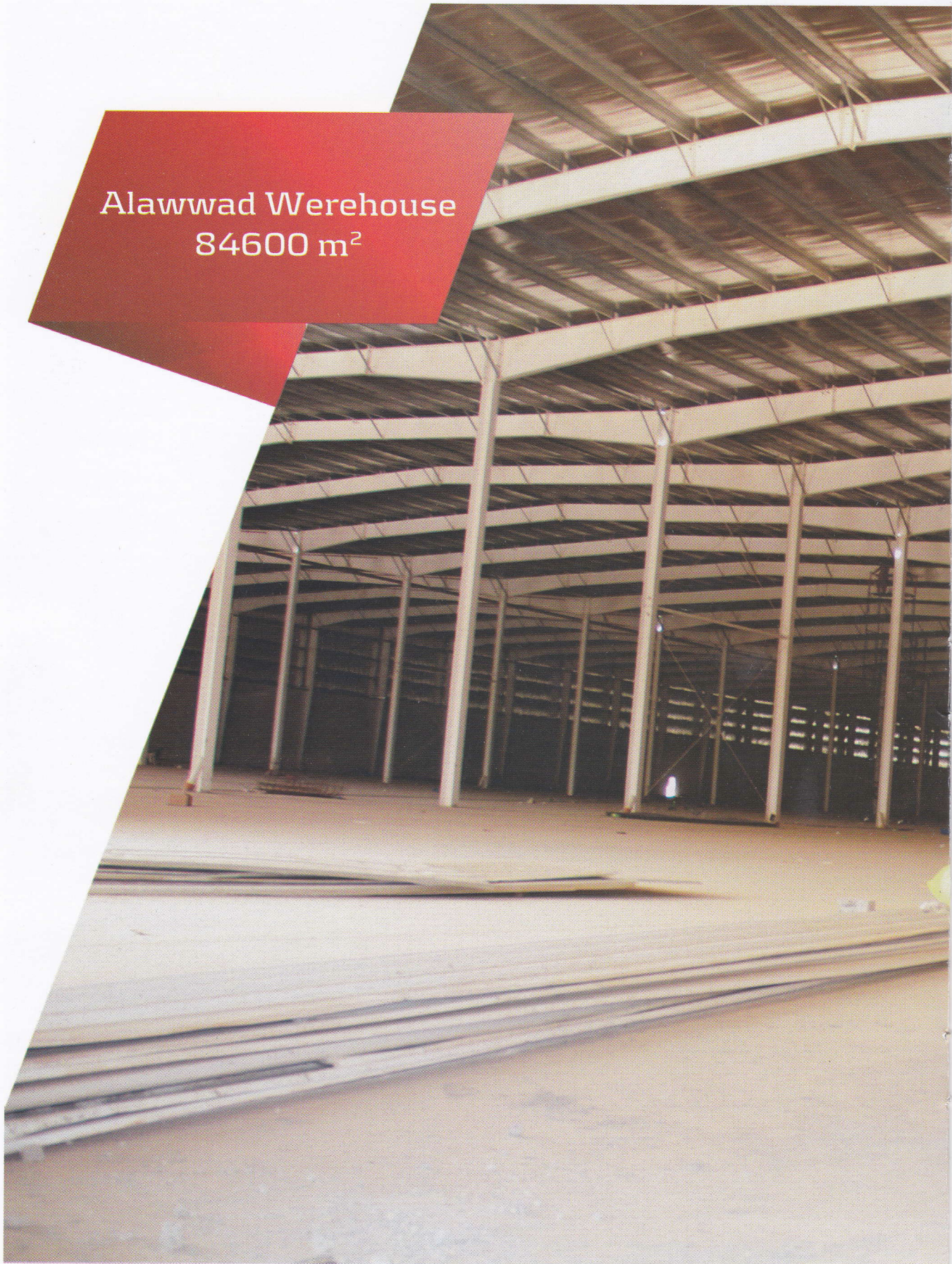


Water Factory
5700 m²



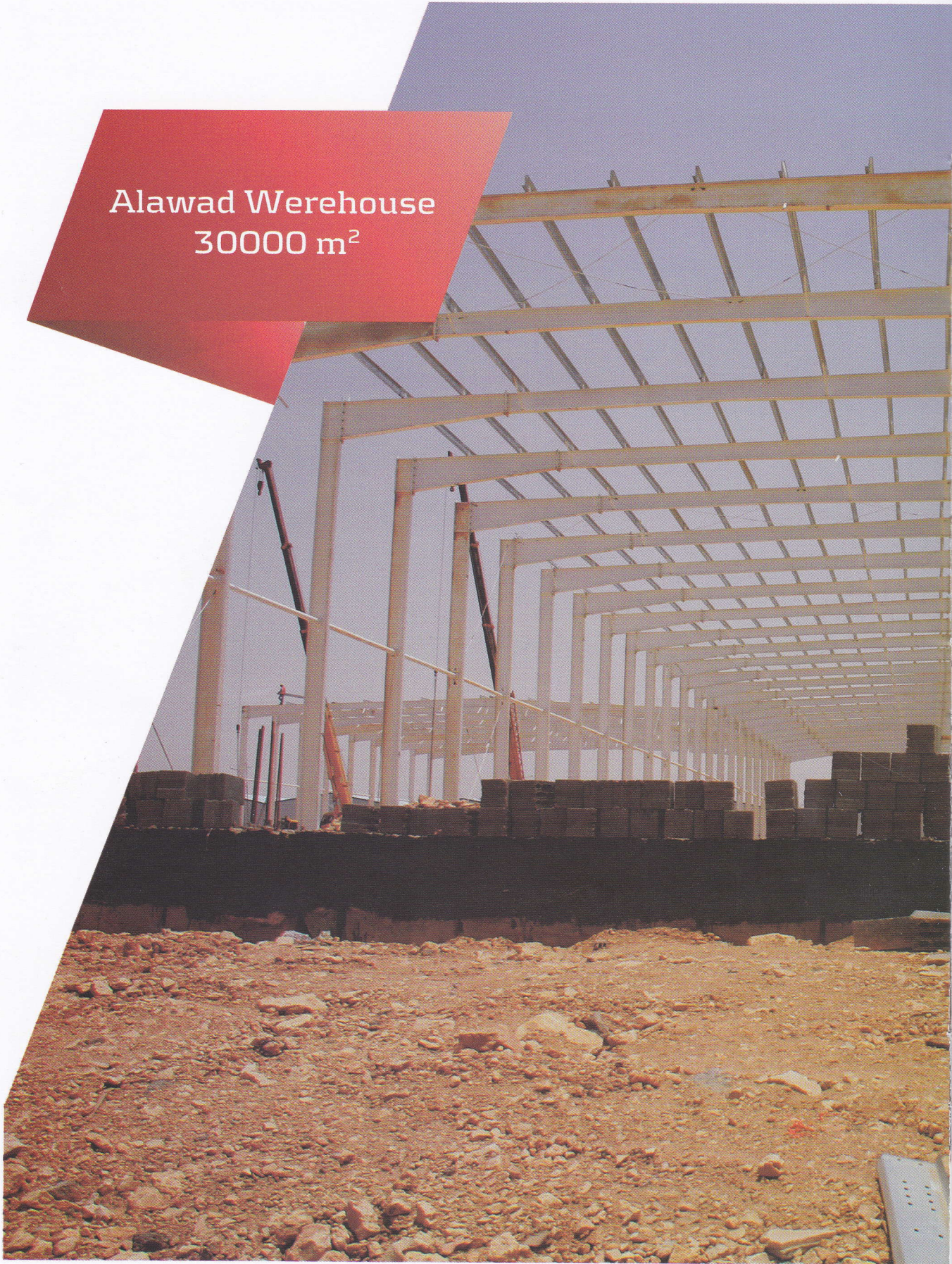


Alawwad Warehouse
84600 m²



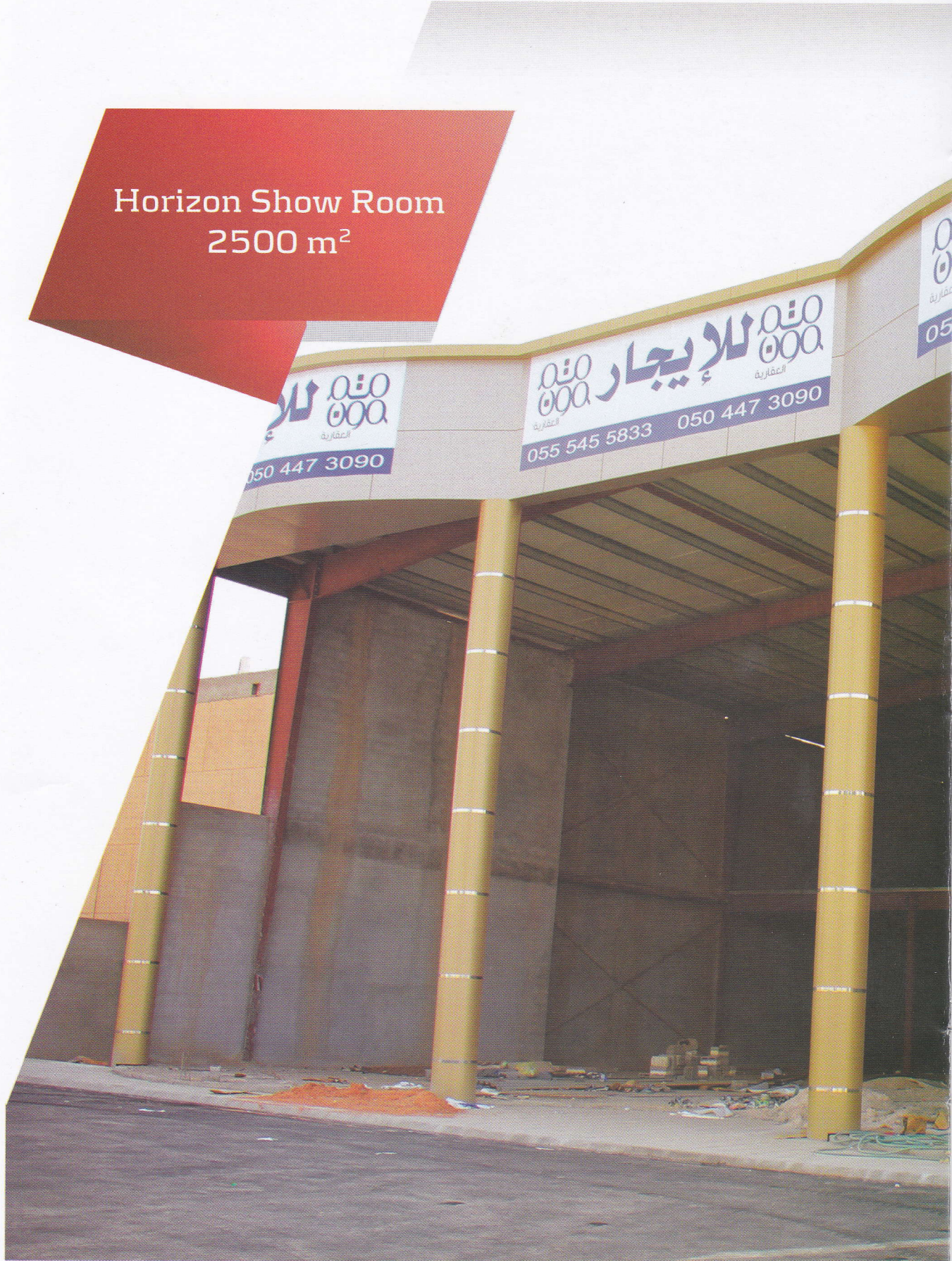


Alawad Warehouse
30000 m²



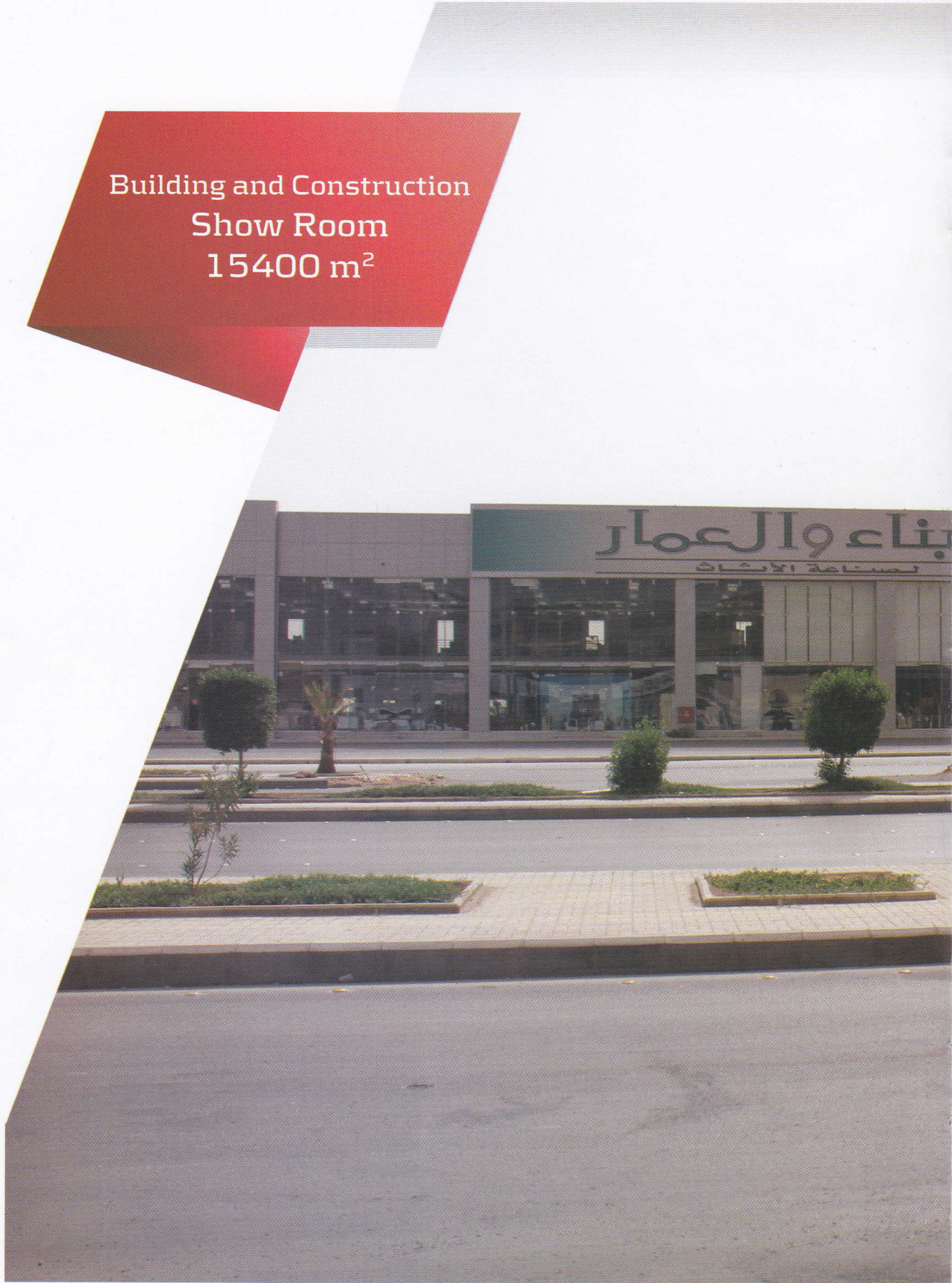


Horizon Show Room
2500 m²



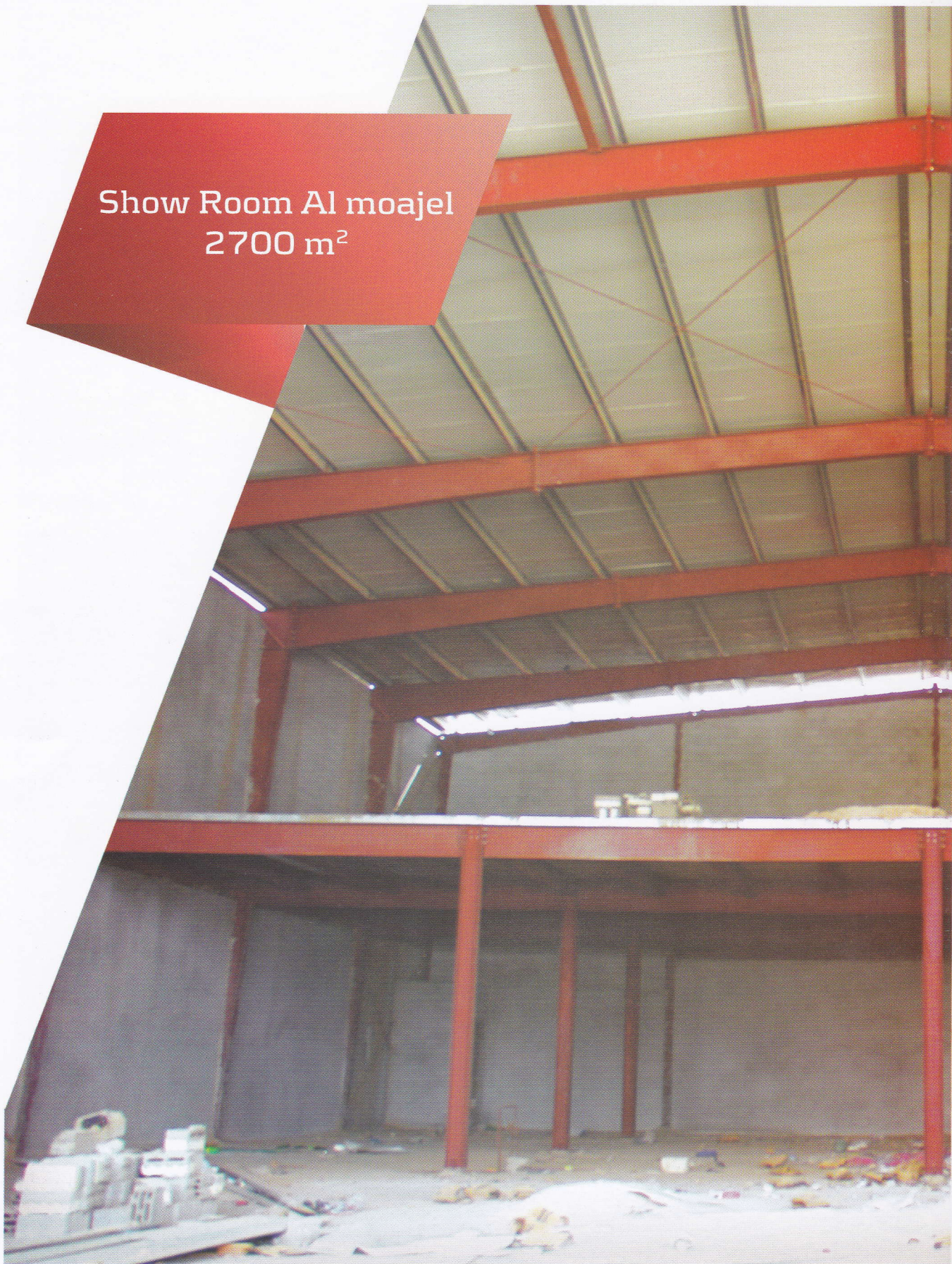


Building and Construction
Show Room
15400 m²



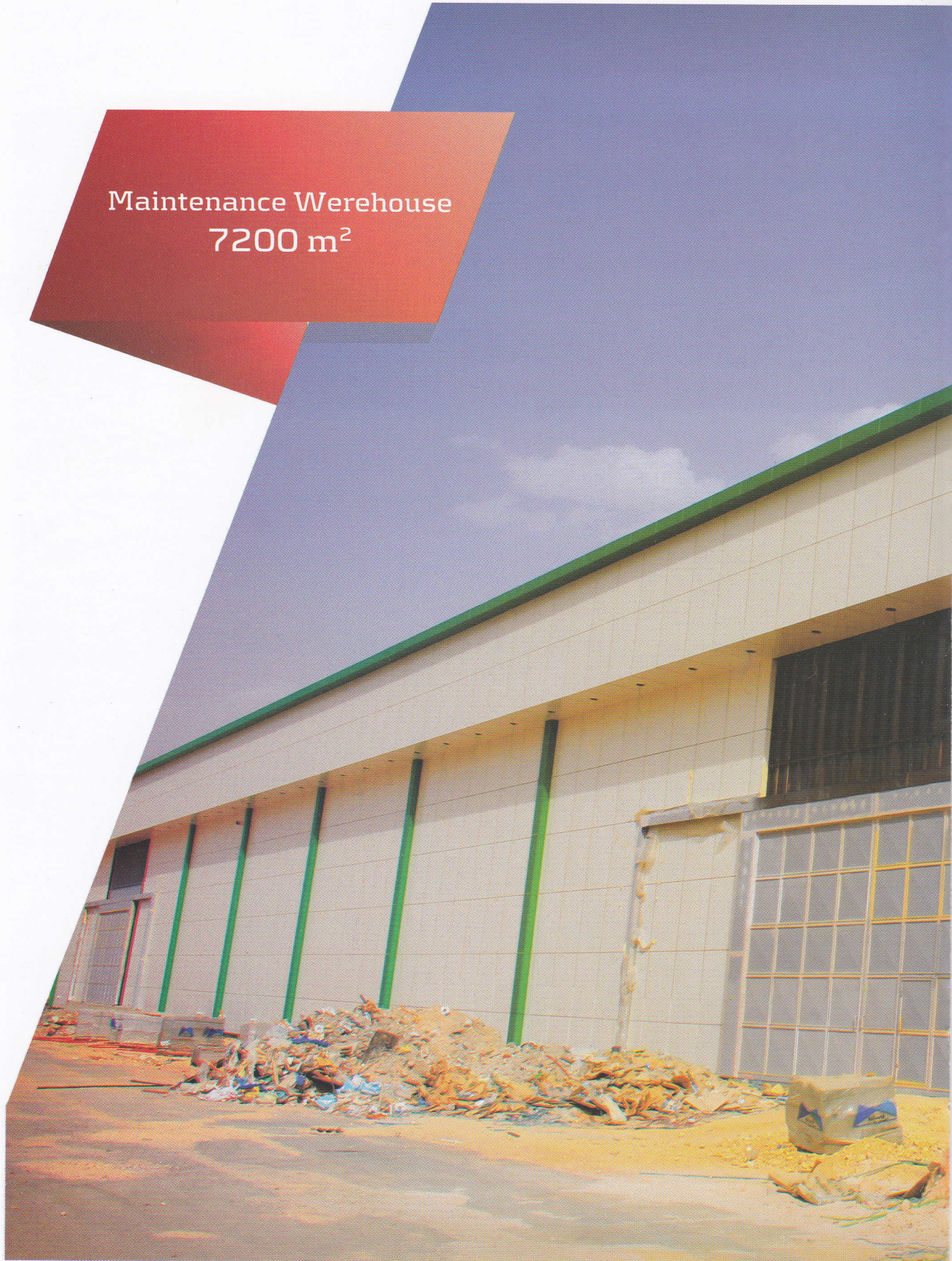


Show Room Al moajel
2700 m²



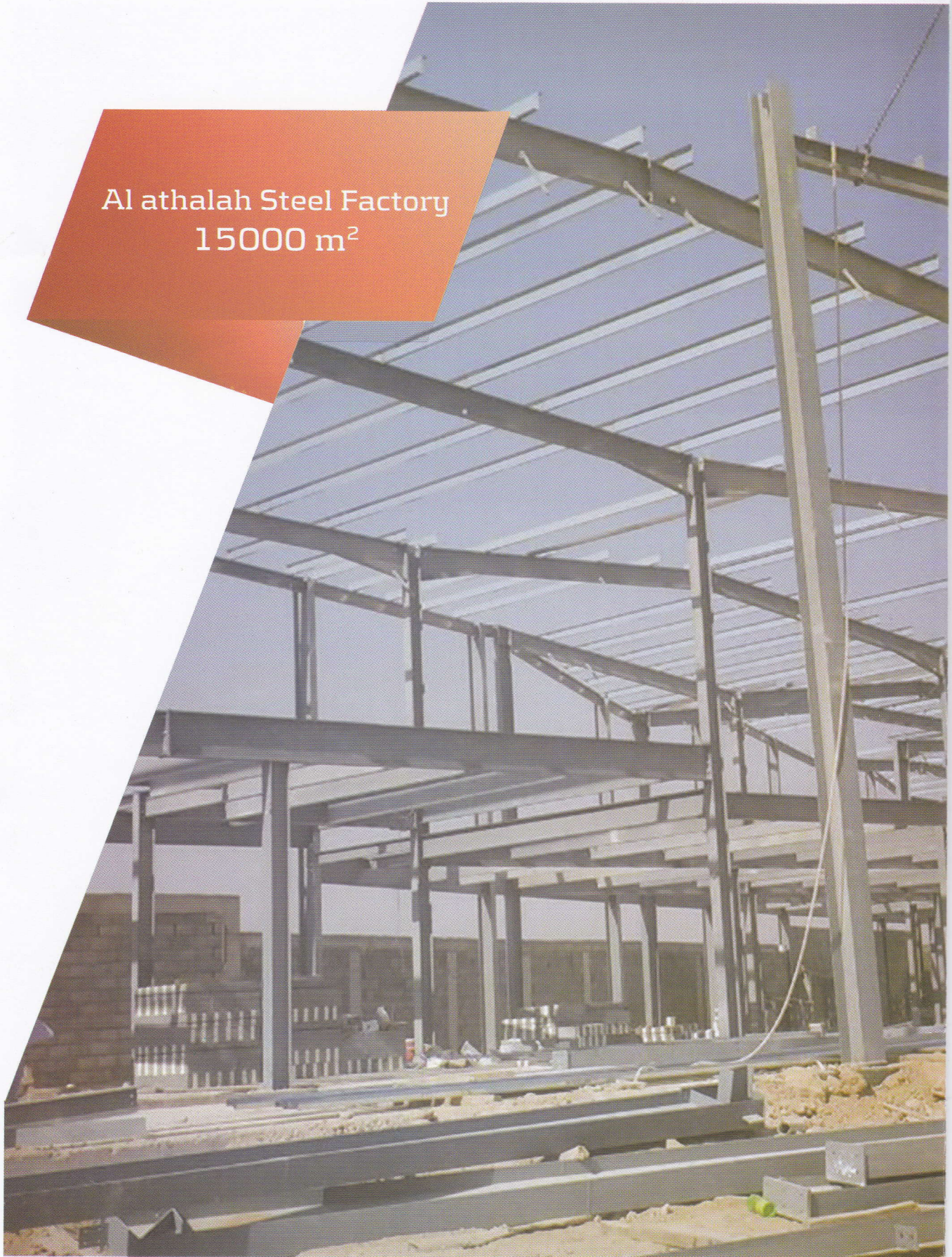


Maintenance Warehouse
7200 m²





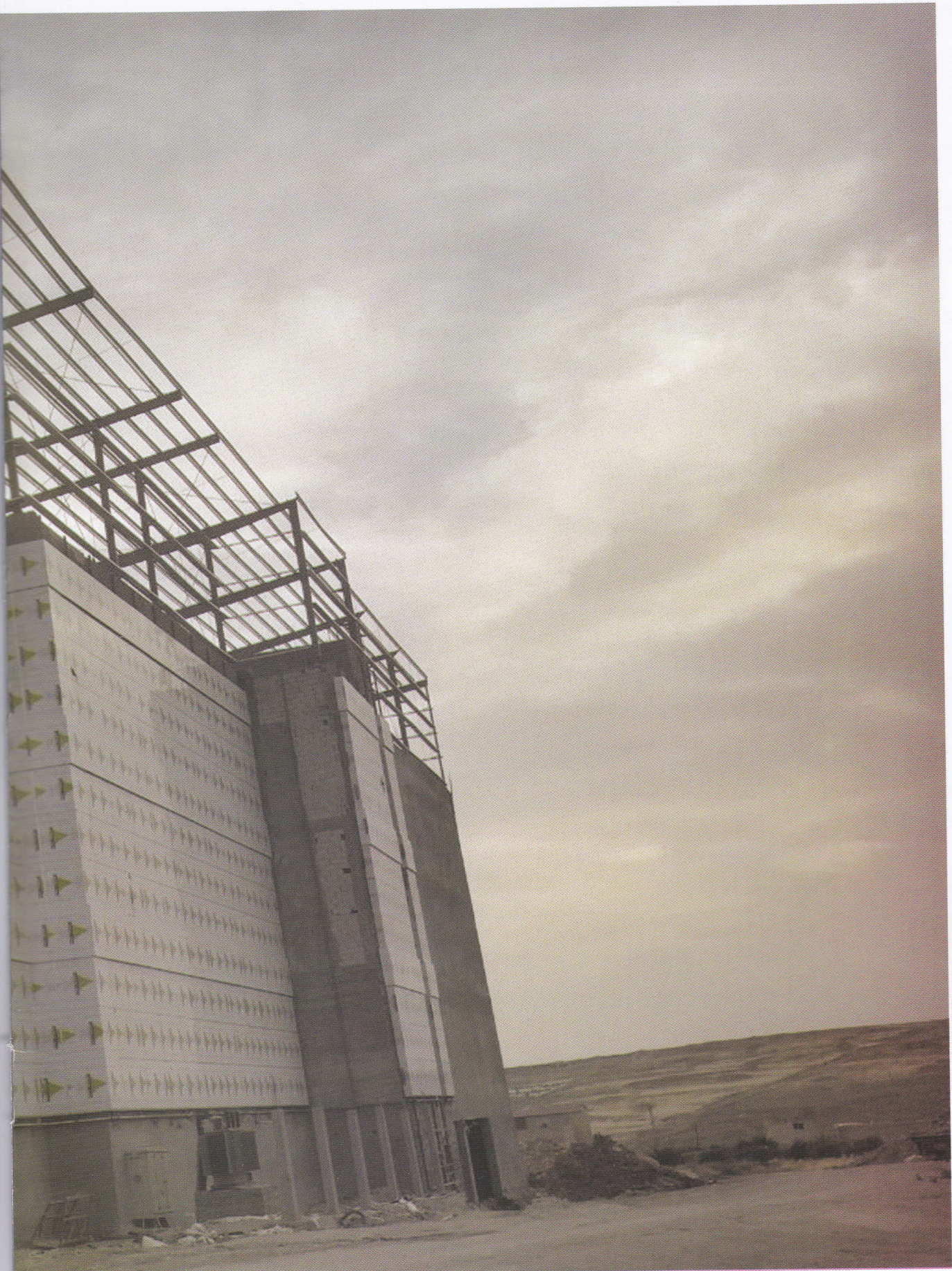
Al athalah Steel Factory
15000 m²





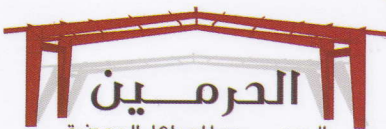
All Karak Mall





THE CLIENTS





الحرمين للهياكل المعدنية
Al Haramin For Structural Steel

إحدى شركات روفينج لأنظمة الحديد

المصنع والمركز الرئيسي
الأردن - عمان - الفيصلية - الموقر
جوال : ٠٠٩٦٢٧٩٢٠٤٧٤٢٣
info@roofingksa.com
www.roofingksa.com